



# Santiam Service Integration

Integration, Collaboration, Building Relationships

*A Program of Santiam Hospital*



# *What is Service Integration?*

---

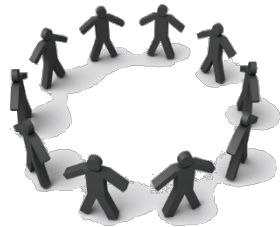
*Service Integration (SI) is a partnership between four school districts, Santiam Hospital, and 180 partnering organizations, agencies, and individuals throughout the Santiam Region.*

It is a model for how we do business in the region for connecting individuals and families to valuable resources and services

# *Service Integration is ...*

---

Community and  
agency partners...



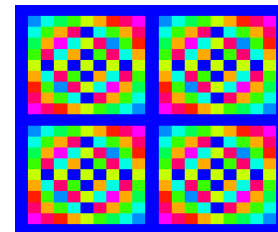
by matching resources to  
clearly defined needs...



expediting  
solutions...



while avoiding  
duplication of  
service.



# *How is SI Funded?*

<b>Local School Districts and Santiam Hospital and Local Donors</b>	<b>Santiam Hospital</b>
<p><b>Contribution to the Service Integration teams. Each SI team receives between \$7,500 and \$8,000 of support funds each fiscal year.</b></p> <p><b>With the exception of the Scio Team, it should be noted that for the 21-22 and 22-23 years, neither school district, nor hospital have had to contribute funds due to leveraging partners.</b></p>	<p><b>1 Full Time staffing for facilitation and coordination.</b></p> <p><b>Leadership, materials, supplies, office space, and technology.</b></p>



*SI includes four teams and a dynamic process that ...*

---

- Connects service providers with identified needs;
- Builds relationships among teams members;
- And provides funds to address service requests so...

*Community solutions can be created with cost and time efficiencies.*

# *Service Integration Teams*

---

- **Four SI teams:**
  - North Santiam
  - Santiam Canyon
  - Cascade
  - Scio
- **Teams are made up of:**
  - County Agencies
  - School Districts
  - Non Profits
  - Faith Communities
  - City Agencies
  - State Agencies
  - Private Businesses
  - Individual Citizens



## *Service Integration Teams*

---

- Operate independently
- Address and respond to local needs
- Allocate team funds to support projects & community needs
- Network and share resources



# *Solutions Supported by SI*

---

***Urgent Needs:*** Immediate medical services or emergency housing or utility assistance.

***Basic Needs:*** Food, clothing, household and hygiene items.

***Education:*** Classes, tuition, fees, and literacy programs for children or adults.

***Extra Curricular:*** Fees, materials, clothing or shoes needed for participation in a school-related activity.

***Youth Development:*** Leadership/learning opportunities not part of the regular school programs.

***Community Development:*** Events/Activities providing opportunities for a broad spectrum of people.





# Solutions Supported by SI cont..

---



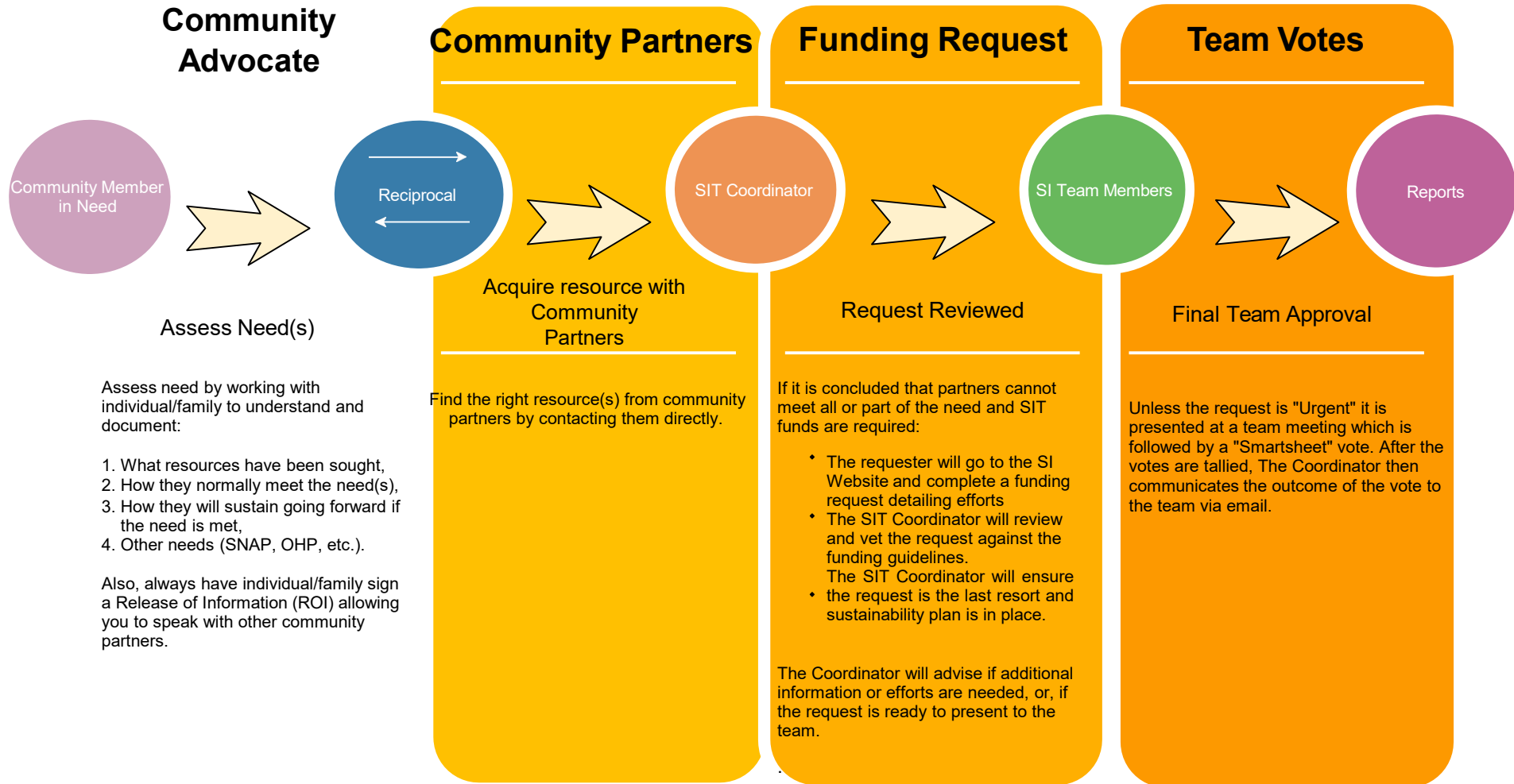
# Different Funding Partners

---

**In addition to School District and Hospital Funds, we currently have:**

- **Early Learning Hub (ELH) Funds**
- **United Way Funds**
- **Neighbor to Neighbor Funds**

# Service Integration Funding Request Process



Integration • Collaboration • Building Relationships



# Santiam Service Integration Contact Information

---

Kim Dwyer

[kdwyer@santiamhospital.org](mailto:kdwyer@santiamhospital.org)

503-409-3652 (cell)

503-769-9319 (office)

For more information:

[www.santiamhospital.org/sit.php](http://www.santiamhospital.org/sit.php)



# *Santiam SI Social Media*

---

Facebook:

[www.facebook.com/](http://www.facebook.com/)

santiamserviceintegration

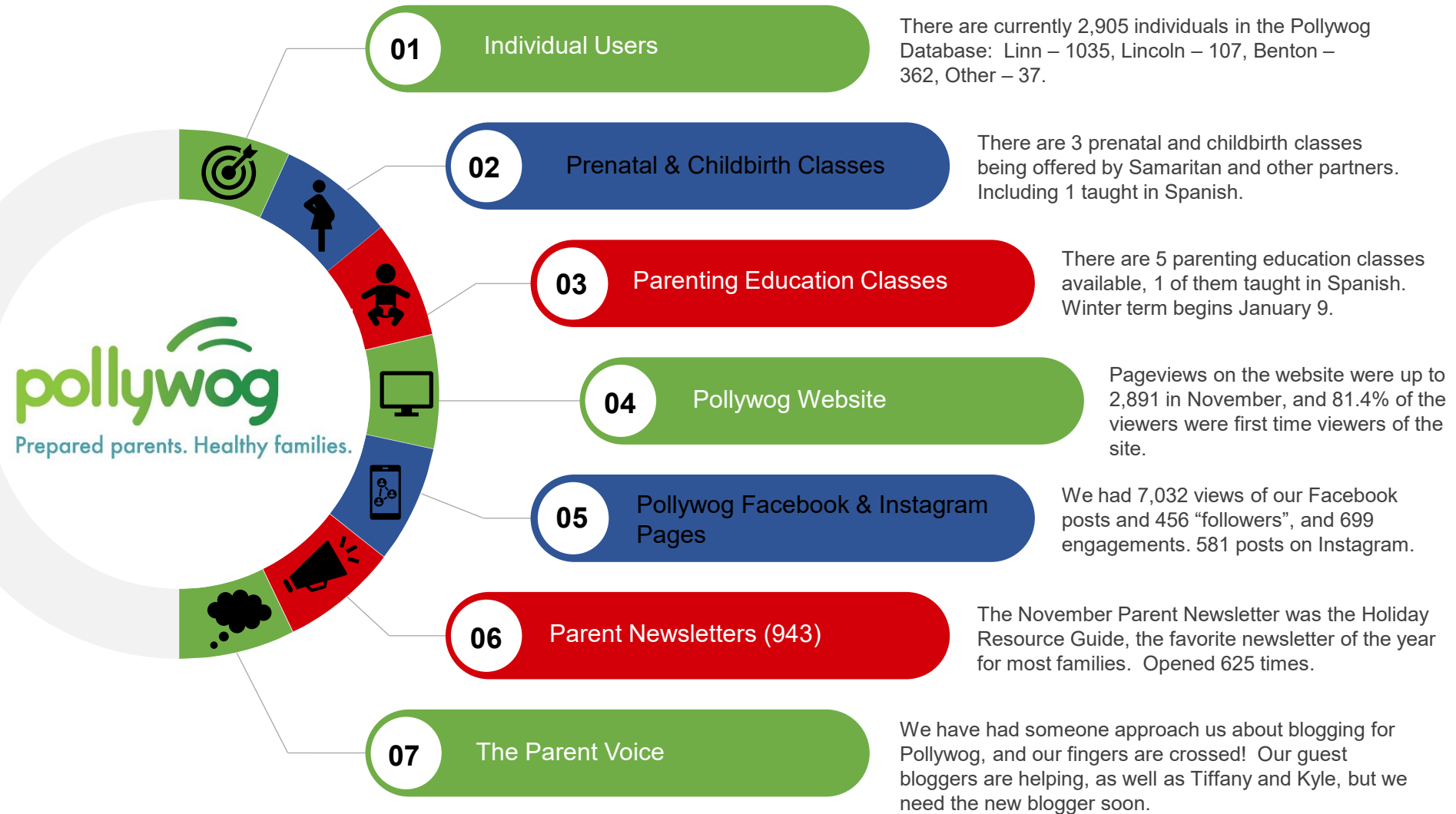
Instagram:

<https://www.instagram.com/>

[santiam.service.integration/](https://www.instagram.com/santiam.service.integration/)

# Pollywog Update

1 December 2022



**30** Database Floating Users

**6** Database Dedicated Users

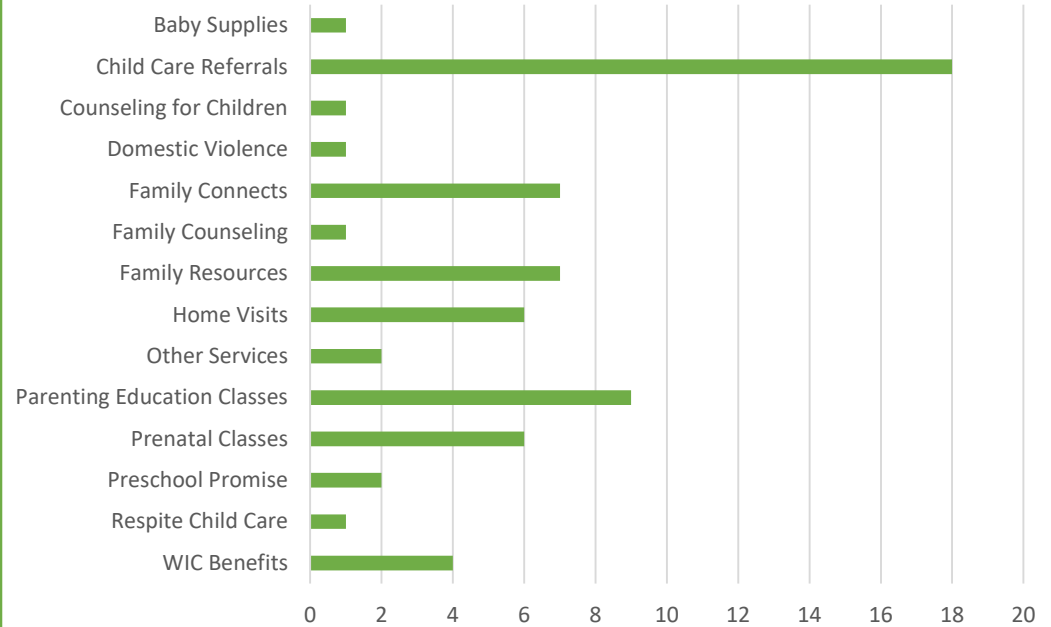


**34** Linn County Partners

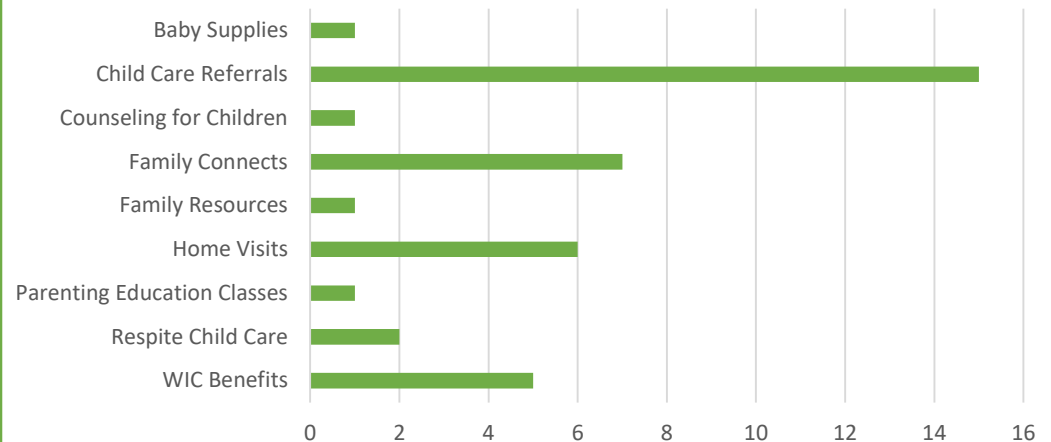
**22** Lincoln County Partners

**26** Benton County Partners

November Service Requests – 66



November Referrals - 39



## Family Connects Update, December 2022

### Regional Family Connects Data

#### Baby's Age at Family Connects Home Visit:

<i>Less than 14 days:</i>	<i>1</i>
<i>14 to 34 days:</i>	<i>119</i>
<i>35 to 55 days:</i>	<i>51</i>
<i>56 to 83 days:</i>	<i>24</i>
<i>More than 12 weeks:</i>	<i>1</i>

Family Connects visits are designed to happen when a baby is around 3 weeks old. This time is recognized as a critical period for both parents and baby, especially regarding maternal mental health, feeding challenges, and following up with appropriate medical professionals.

No family should experience this period alone. Our local Family Connects nurses are available to connect families with the community resources and medical and mental support they need.

### Family Connects Can Reduce Race Disparities in Families of Color

A new analysis of previous Family Connects research examines the extent of race disparities in birthing families, and if interventions like Family Connects can gain enough reach and fidelity to affect these disparities.

The new report, published in [The Lancet Regional Health Americas](#), found there are “large and statistically significant differences between Black families and Non-Hispanic White families were found in maternal anxiety, maternal depression, father non-support, child emergency care, and child maltreatment investigations.”

Public health interventions like Family Connects were associated with statistically significant reductions in these and other disparities. This report also provides “a method, metric, and mandate” to test public health programs and prioritize a reduction of race disparities.

### Provider & Partner Outreach

Larger Family Connects posters are now available. Please let us know if you need some for your organization or clinic rooms.