

Family Connects Update, September 2022

Current Data

Nurse Home-Visits to date: 286

Eligible births: 1409

Insurance of mother: 168 public insurance, 90 private insurance

Community Alignment

Provider outreach continues to be a primary focus of community alignment. We have beautiful new posters and wallet cards to distribute to clinics, thanks to Sam. Our goal is to increase our population reach percentage, which currently averages to about 20%.

The more families hear about Family Connects in multiple places, the more likely they are to schedule a visit when their baby is born.

If you'd like posters or wallet cards for your agency, let us know!

Program Updates

The Maternal and Child Health (MCH) section of OHA is making progress in proposing and passing rules related to specific details of Family Connects operations, as required by the passage of SB 1555. These rules are needed for reimbursement from private insurance companies for Family Connects visits.

The Rules Advisory Committee (RAC) created to discuss and implement these rules was comprised of representatives from insurance companies, Early Learning Hubs, county health departments, community organizations, Tribal leaders, and members of the community.

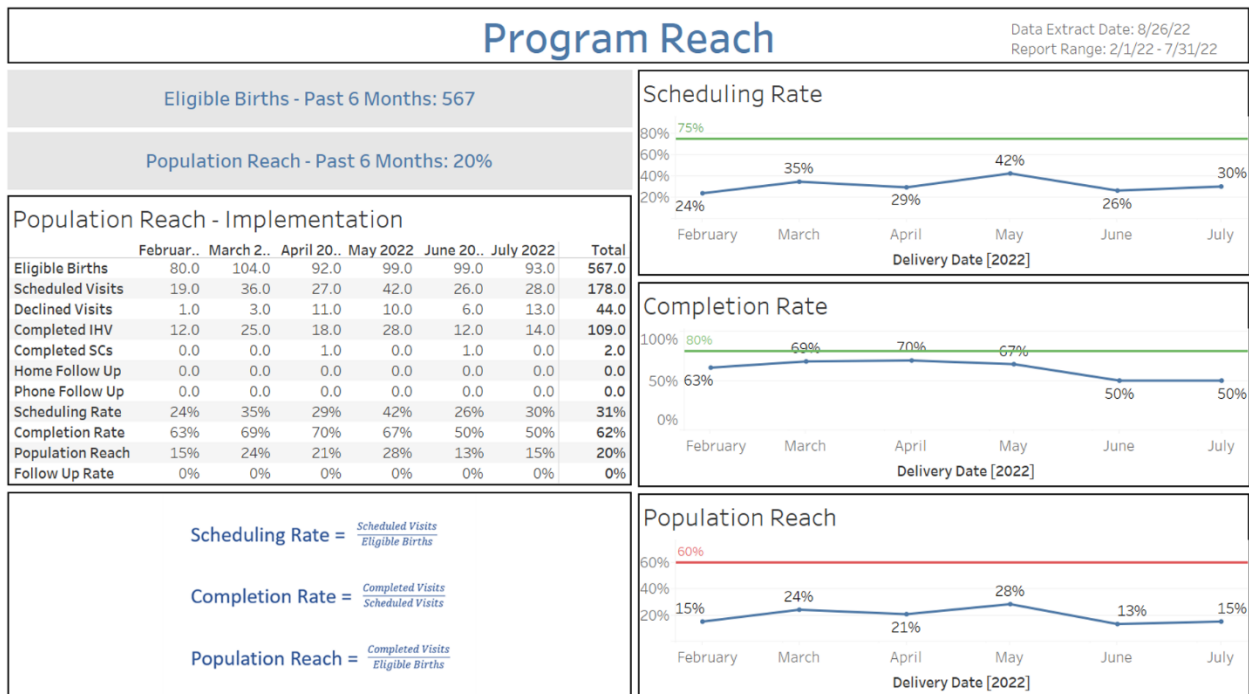
The first set of rules, numbers 333-006-0000 through 333-006-0160, was completed as of 7/29/22. They state that the definition of Newborn Nurse Home Visiting Services includes all program costs, and specific rules about the use of telemedicine for these types of visits.

The second set of rules, numbers 333-006-0180 through 333-006-0190, is currently in process. This set relates to the method of reimbursement, the description of what visits are covered at which rates, and the method for rates determination. Following a Public Hearing for comments on these rules on 9/22/22, and acceptance of any written comments by 9/27/22, OHA will respond with a

report and hopes to file the rules with the Secretary of State by mid-October. Both sets of rules will take effect on 1/1/2023.

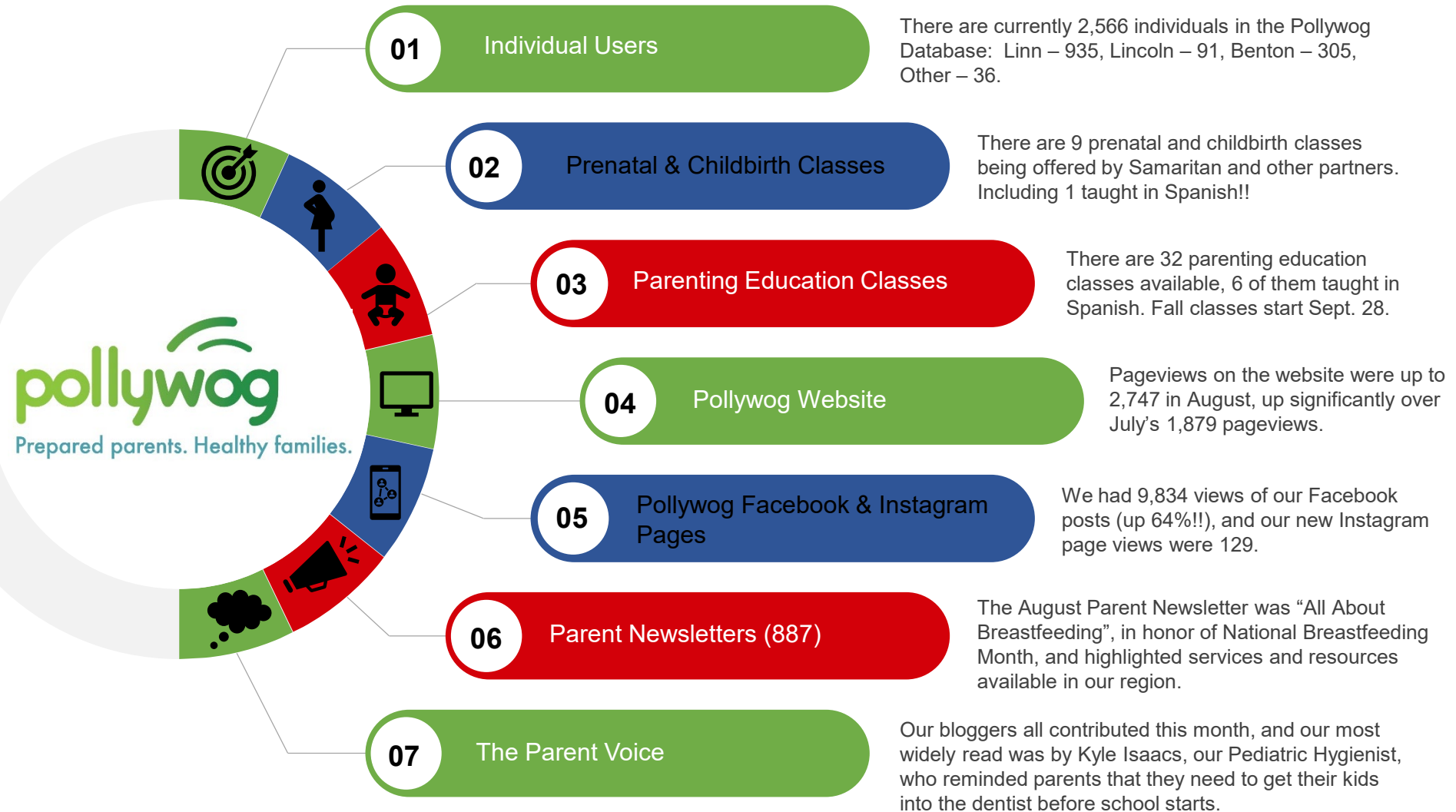
Between now and the start of these rules, OHA and the providers of newborn nurse home visiting programs will work to update coding and payment information, as well as planning billing system updates.

Regional Data from Family Connects International



Pollywog Update

1 September 2022



23 Database Floating Users

8 Database Dedicated Users

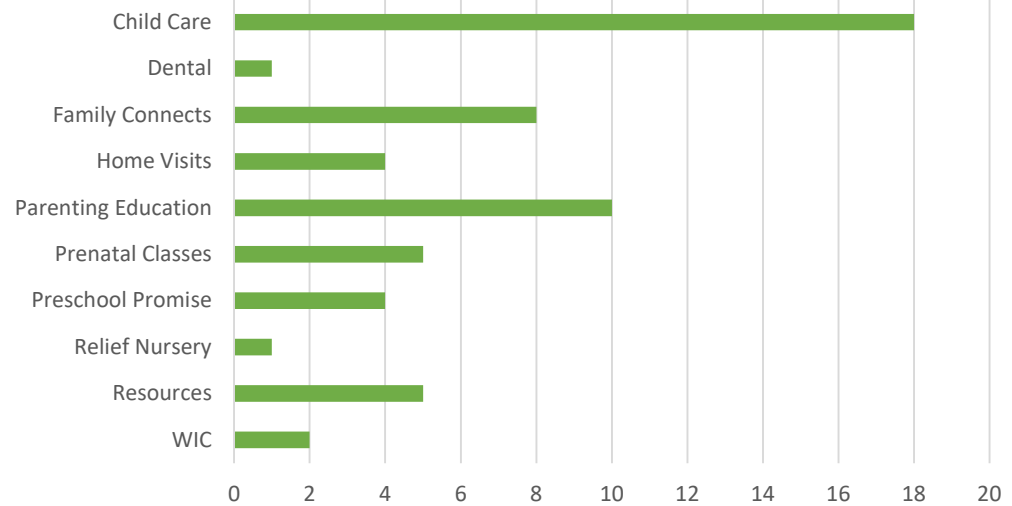


33 Linn County Partners

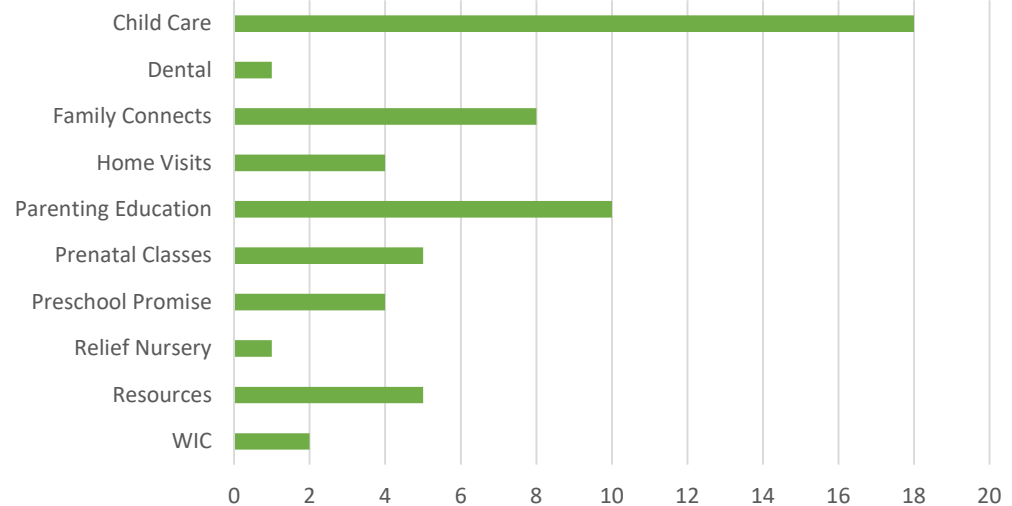
22 Lincoln County Partners

26 Benton County Partners

August Referrals - 31



August Service Requests - 60



Health Care Integration Workgroup InterCommunity Health Network – Coordinated Care Organization (IHN-CCO) Update

September 13, 2022

InterCommunity 
Health Network CCO

IHN-CCO Update Topics

- **IHN-CCO General Updates**
- **IHN-CCO Care Coordination: Future Partners**

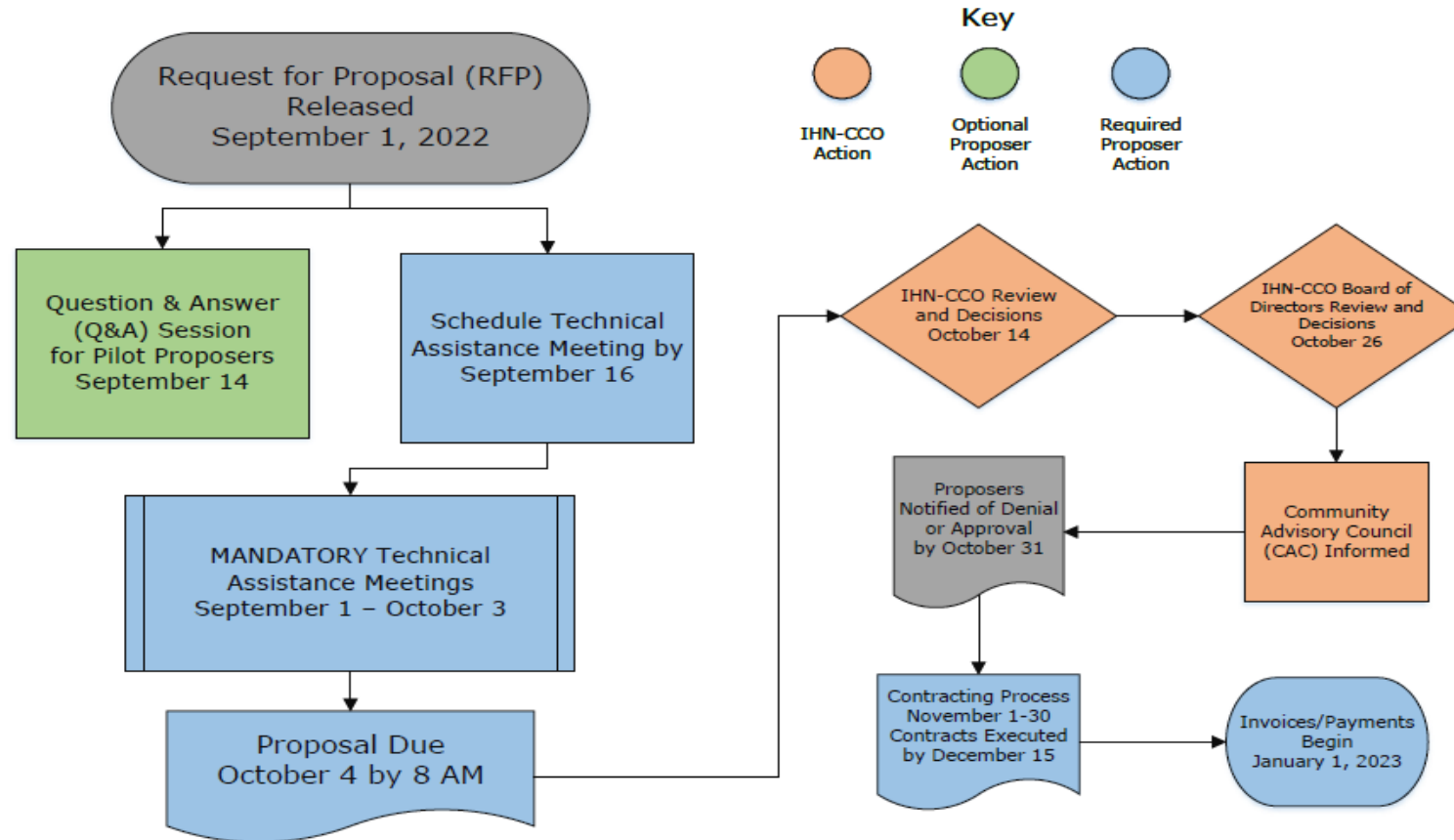
IHN-CCO General Updates

IHN-CCO General Updates

- OHA 2022 1115 Waiver still under CMS review, which includes greater coverage for youth and transition populations and more community provider supports (approval of terms late September)
- IHN-CCO is moving care coordination responsibilities more in-house; previously worked with a delegate (out of another state) and now looking to extend some responsibilities to the Care Hub; our Care coordination staff and the Care Hub are better knowledgeable of community supports and resources.
- Service Integration Team being established in East Linn county; meeting basic, immediate needs and providing referrals for all individuals in needs
- Behavioral health staffing changes: Todd Jeter is replacing Sheryl Fisher as Interim BH Director (tjeter@samhealth.org)
- Flexible Services: Outreach to 580 members flagged for a/c need; 142 a/c units purchased and distributed at \$51,500.43 total spend.
- IHN-CCO additionally conducted outreach to approximately 160 high-risk members in preparation for recent power outages and wildfires.

SHARE Initiative

IHN-CCO SHARE Initiative 2022 Request for Proposal Timeline



Unite Us Update

A path forward...

- IHN-CCO continues to support the use of Untie Us in Linn, Benton, and Lincoln counties for community supports and provider referrals and SDoH screenings.
- Unite Us will be more effective with more users in the community for which to do referrals.
- IHN-CCO is currently working with Unite Us to bring greater value for community partners that includes providing Unite Us case management functionality.

Community partners interested in this additional functionality or onboarding in general can reach can contact Eric Vinson at evinson@samhealth.org.

Questions?

