

CORVALLIS-BENTON COUNTY
PUBLIC LIBRARY

Digital Safety for Kids & Teens: 2 sessions



Digital Safety for Ages 2-7
Wednesday, January 22, 6:00-7:30 PM



Digital Safety for Ages 8-17
Tuesday, February 4, 6:00-8:00 PM



Melissa Whiteman, founder of Living Free Consulting LLC and digital safety expert, will share tips for keeping youth safe in the digital age. Topics will include:

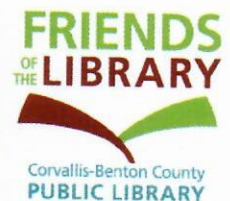
- Understanding tech culture
- Social media
- Technology's impact on the developing brain
- Cyberbullying
- Video games
- Online predators
- Exposure to adult content
- Internet addiction
- Screen time
- Device use recommendations
- How to have proactive conversations about online safety with youth of all ages

Childcare provided by Linn-Benton Community College childcare staff.



CBCPL Main
Meeting Room

Weds., Jan. 22: 6 PM
Tues., Feb. 4: 6 PM



Corvallis-Benton County Public Library • 645 NW Monroe Ave • Corvallis, OR • 541-766-6794

cbcpubliibrary.net • askalibrarian@corvallisoregon.gov

The Corvallis School District does not necessarily sponsor this organization or its activities. The District assumes no liability for its contents or events arising out of this distribution.

OREGON COMMUNITY FOUNDATION

PROPOSED METRICS FOR POLLYWOG / SAMARITAN HEALTH / PSN

METRIC #1: ACCESS TO PARENTING EDUCATION

- # OF FAMILIES REACHED
- # OF FAMILIES PARTICIPATING IN PROGRAMS
- # OF PROGRAMS FAMILIES SIGN UP FOR
- # OF CLASSES FAMILIES ATTEND IN A SERIES
- # AND TYPES OF PARENTING EDUCATION PROGRAMS OFFERED
- # OF RESOURCES DISTRIBUTED (FLYERS, POSTERS, ETC.)
- # OF LOCATIONS WHERE RESOURCES ARE DISTRIBUTED
- # OF MARKETING EFFORTS

METRIC #2: NORMALIZATION OF PARENTING EDUCATION

- PARTICIPATION IN PARENTING EDUCATION PROGRAMS REPRESENT THE POPULATION OF INTEREST/REGION
- PARENTING EDUCATORS REPRESENT THE POPULATION OF INTEREST/REGION
- REFERRALS COME FROM DIVERSIFIED SOURCES
- STIGMA OF PARTICIPATION IN PARENTING EDUCATION
- # AND TYPES OF REFERRALS
- AWARENESS OF PARENTING EDUCATION PROGRAMS

METRIC #3: PARENT/FAMILY OUTCOMES ASSOCIATED WITH PARENTING EDUCATION PARTICIPATION

- FAMILY REPORTS SOCIAL SUPPORT/ISOLATION
- FAMILY REPORTED PARENTING/FAMILY STRESS
- FAMILY KNOWLEDGE AND USE OF POSITIVE PARENTING SKILLS AND STRATEGIES
- INSTANCES OF REPORTED CHILD ABUSE/NEGLECT
- FAMILY UNDERSTANDING OF CHILD DEVELOPMENT/STRATEGIES TO FOSTER HEALTHY GROWTH AND DEVELOPMENT

METRIC #4: CHILD OUTCOMES ASSOCIATED WITH PARENTING EDUCATION PARTICIPATION

- CHILD HAS SECURE ATTACHMENT RELATIONSHIPS WITH TRUSTED ADULTS
- CHILD HAS POSITIVE SOCIAL-EMOTIONAL/MENTAL HEALTH
- CHILD IS READY FOR SCHOOL

OREGON COMMUNITY FOUNDATION PROPOSED METRICS FOR POLLYWOG / SAMARITAN HEALTH / PSN

METRIC #5: PARENTING HUB OUTCOMES

- # AND TYPES OF REFERRALS FROM PARTNER AGENCIES
- OPEC HUB STAFF/PARENTING EDUCATORS' KNOWLEDGE OF HEALTHCARE RESOURCES

METRIC #6: HEALTHCARE OUTCOMES

- HEALTHCARE PROFESSIONALS' PARENTING EDUCATION KNOWLEDGE
- HEALTHCARE PROFESSIONALS' UNDERSTANDING OF CONNECTIONS BETWEEN PARENTING/SOCIAL-EMOTIONAL WELL-BEING AND HEALTH OUTCOMES
- HEALTHCARE PROFESSIONALS' STRESS RESPONDING TO QUESTIONS RELATED TO PARENTING OR REFERRING PARENTS TO PARENTING EDUCATION RESOURCES
- HEALTHCARE PROFESSIONALS' CAPACITY TO FILL A GAP IN HOLISTIC CARE/SERVICES
- HEALTHCARE PROFESSIONALS' FREQUENCY OF MEETING CURRENT CCO GOALS/AIMS/METRICS

Join In! Our Students. Our Success.

**STUDENT
SUCCESS
ACT**

THE STUDENT SUCCESS ACT MARKS A TURNING POINT FOR EDUCATION IN OREGON



When fully implemented,
our state will see an additional
\$1 BILLION INVESTMENT
in schools each year.

This investment will provide new **opportunities** for
every student in our state, particularly students who
have been historically underserved.



HOW THE **STUDENT SUCCESS ACT** INVESTS IN OUR STUDENTS

At least
50%

Student
Investment
Account

At least
20%

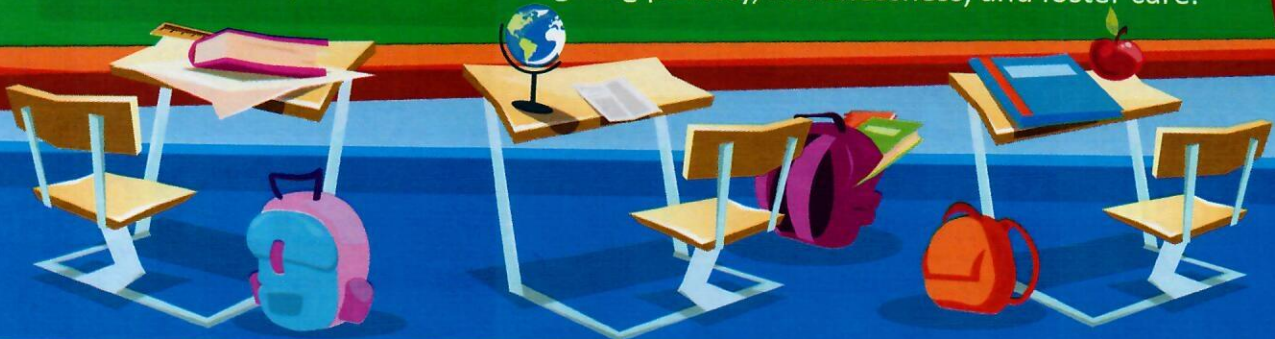
Early
Learning
Account

Up to
30%

Statewide
Education
Initiatives

ROOTED IN EQUITY, AUTHENTIC COMMUNITY ENGAGEMENT, AND SHARED ACCOUNTABILITY FOR STUDENT SUCCESS.

The law requires school districts to build on the strengths and assets of young people, educators, families across the state, including members of the nine federally recognized tribes; students of color; students with disabilities; emerging bilingual students; and students navigating poverty, homelessness, and foster care.



SSA STUDENT INVESTMENT ACCOUNT TIMELINE 2019-2020

Community Engagement

September - October

Develop Student Investment Account Application

January - February

Continue Community Engagement

May - June

November - December

Continuous Improvement Plan

March - April

Submit Student Investment Account Application

July - beyond

Work Together to Put Plan into ACTION

WHAT IS THE STUDENT INVESTMENT ACCOUNT?

Close to **\$500 MILLION** in non-competitive grant money for all Oregon school districts and eligible charter schools.

New money has two purposes:

1. Meet students' mental and behavioral health needs.
2. Increase academic achievement and reduce academic disparities for:
 - Students of color;
 - Students with disabilities;
 - Emerging bilingual students; and
 - Students navigating poverty, homelessness, and foster care; and other students that have historically experienced disparities in our schools.

5 Areas for Input

- 1 Reducing academic disparities (gaps between outcomes for different student groups)
- 2 Meeting students' mental and behavioral health needs
- 3 Providing access to academic courses
- 4 Allowing teachers and staff sufficient time to collaborate, review data and develop strategies to help students stay on track to graduate
- 5 Establishing and strengthening partnerships



Allowable Investments

CLASS SIZE

WELL-ROUNDED EDUCATION

INSTRUCTIONAL TIME

HEALTH & SAFETY

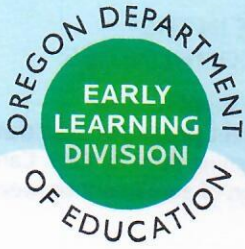
FOR MORE INFORMATION

Visit oregon.gov/ode/StudentSuccess
Follow us @ORDeptEd | #studentsuccessact



OREGON
DEPARTMENT OF
EDUCATION

Oregon achieves . . . together!



EARLY LEARNING IN THE STUDENT SUCCESS ACT

A STUDENT'S SUCCESS BEGINS EARLY

Children are born learning. Learning does not begin in kindergarten or even the first day of preschool. It starts at birth. Quality early learning sets children up for success.

The Student Success Act creates a new **Early Learning Account** to fund investments focused on children under the age of five and their families. Funding will support the expansion of existing programs, the creation of new programs and support for communities to deliver early learning. Partnerships with local community-driven organizations, such as Early Learning Hubs and Child Care Resource and Referral Entities, will be critical to the success of this work and engaging families and providers across Oregon. New and expanded programs will help narrow gaps for low-income families to access early care and education programs.

THE EARLY LEARNING ACCOUNT

\$200 million per year (or at least 20% of the overall SSA investment of \$1 billion) will serve 15,000 children birth to five years old in the following ways:

INFANTS AND TODDLERS

High-quality slots for more than 1,000 infants and toddlers through Early Head Start.

PRESCHOOLERS

Improved and enhanced high-quality slots to serve more children.

Funding to ensure all children in Early Childhood Special Education receive the services they need to address developmental delays and disabilities.



FAMILY-FOCUSED INVESTMENTS

Funding for parenting education to support their children's education.

Support for families at-risk of entering or in the child welfare system through Relief Nurseries and Healthy Families Oregon home visiting.

BUILDING THE CAPACITY OF CULTURALLY SPECIFIC ORGANIZATIONS

An historic effort to support culturally specific organizations to deliver early learning services through an Equity Fund, which will reach about 3,000 children.

EQUITY

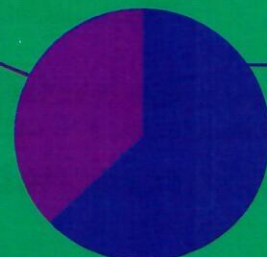
Too many children have not had the opportunity to reach their full potential because of the limited supply of early childhood education and gaps between which families can and cannot afford access to programs. For this reason, the investments in the early learning account target services for young children in low-income families. Through the act, more than 15,000 children will be reached through expanded or enhanced programs.

*current and anticipated

3 AND 4 YEAR OLDS SERVED IN PRESCHOOLS

16,000

3 and 4 year olds in low-income families served in high-quality preschool*



27,000

3 and 4 year olds in low-income families unserved in high-quality preschool

HOW WILL THE EARLY LEARNING ACCOUNT SUPPORT EARLY CHILDHOOD EDUCATORS?

The legislation earmarks **\$12.5 million** for professional learning to support **early childhood educators** with training, technical assistance, coaching and other key supports. In addition, the account will support coaching in Early Head Start, Preschool Promise and Oregon Pre-kindergarten.

WHAT OTHER FUNDS ARE IN THE ACCOUNT TO SUPPORT COMMUNITIES?

Additional funding will help support minor improvements for facilities to meet **program standards**. Funding will also go to Early Learning Hubs for Early Care and Education Plans and coordination of enrollment between preschool programs.

Early Learning in The Student Success Act Timeline



NOW – EARLY 2021

Community-Led Planning

In partnership with local organizations, Early Learning Hubs will lead the process to develop plans to target services within their communities and create a vision to serve all children in their region.



MARCH - JULY 2020

Funding Decisions

The Early Learning Division will lead processes to allocate funding from the Early Learning Account to communities for Early Head Start, Oregon Pre-kindergarten, Preschool Promise, Healthy Families Oregon and the Equity Fund.

The Oregon Department of Education will allocate additional funding for Early Intervention and Early Childhood Special Education.

The Early Learning Division will expand supports for birth to 5 educators.



AUGUST – SEPTEMBER 2020

Services Begin for Children & Families

More than 15,000 children and families will begin receiving services through the Equity Fund, Preschool Promise, Early Head Start, Parenting Education, Healthy Families Oregon, Relief Nurseries and new or enhanced Oregon Pre-kindergarten slots.

These funds are designed to ensure that all children in Early Intervention and Early Childhood Special Education programs will have access to services.



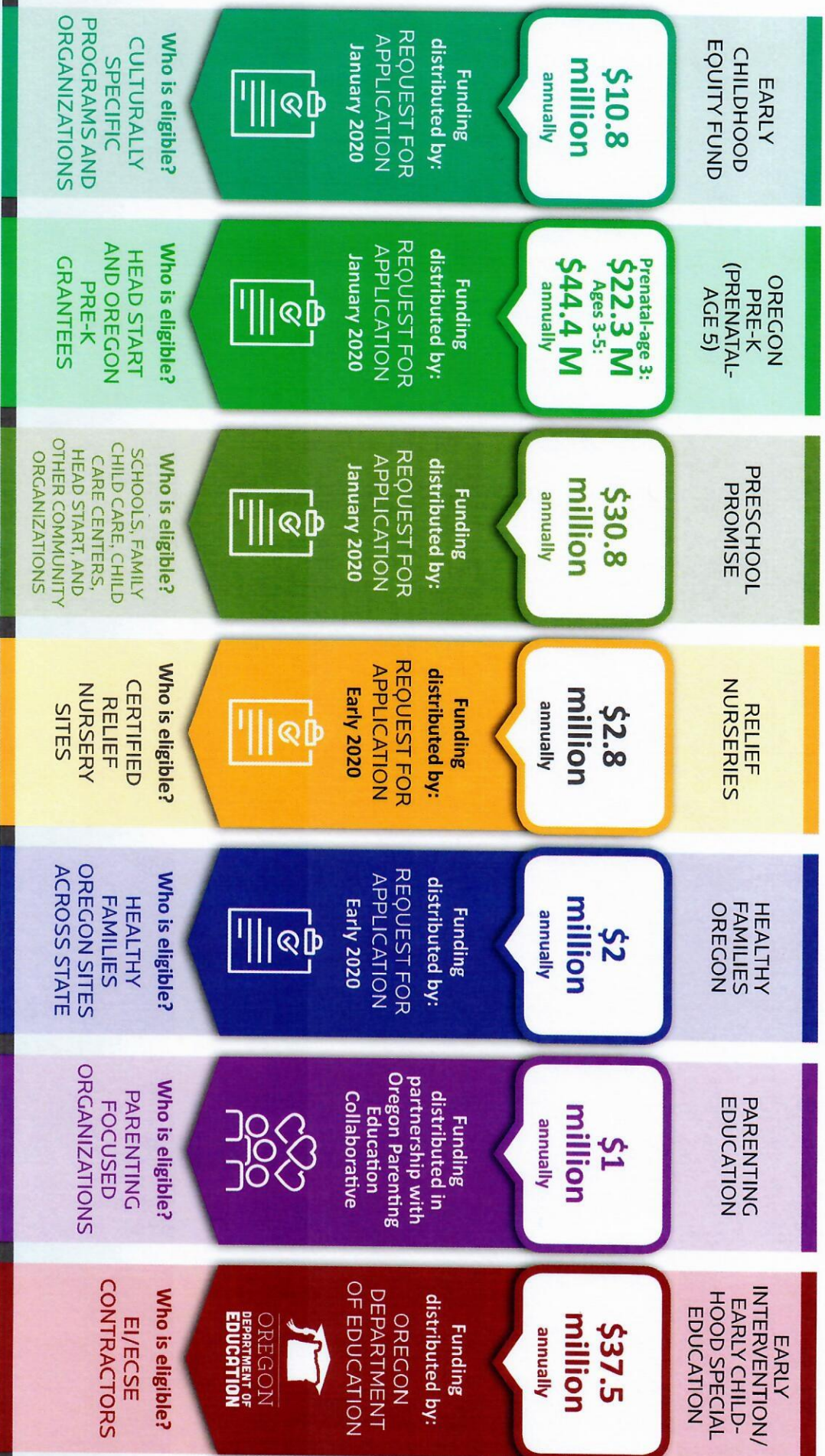
For more information on **early learning investments** in the Student Success Act, go to <https://oregonearlylearning.com/student-success-act>.

#StudentSuccessAct



STUDENT Success Act

HOW FUNDING FOR SERVICES FLOWS FROM THE EARLY LEARNING ACCOUNT



Learn more: <https://oregonearlylearning.com/student-success-act>.
Follow us on Twitter [@OREarlyLearning](https://twitter.com/OREarlyLearning) or Facebook [@OREarlyLearning](https://facebook.com/OREarlyLearning)

#StudentSuccessAct