

----- Forwarded message -----

From: Charissa White <[cwhite@samhealth.org](mailto:cwhite@samhealth.org)>  
Date: Wed, Dec 4, 2019 at 11:14 AM  
Subject: IHN-CCO Access Question  
To: Lynn Hall <[hall@imnberton.edu](mailto:hall@imnberton.edu)>

Hello,

I am reaching out in the hopes you can help answer a question due to your expertise with local children's services. We are doing an informal assessment to find out what areas of healthcare are the most difficult to access for children 0-17. This could include medical, dental and behavioral health services, facilities, and/or treatment. Examples include psychiatric day services or access to primary care for Spanish speaking children. Your input is valuable to us and I look forward to hearing from you. Thank you.

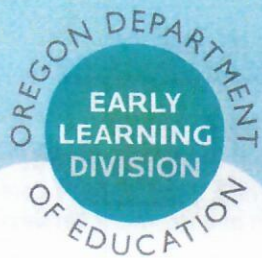
Kind regards,

Charissa White (she/her) | Transformation Analyst | [cwhite@samhealth.org](mailto:cwhite@samhealth.org) | 541-768-7967  
Inter-Community Health Network CCO | *Stronger, Healthier, Together.* [samhealthplans.org](http://samhealthplans.org)

---

Confidentially/Intend: This e-mail message, including any attachments is for the sole use of the intended recipient(s) and may contain confidential and privileged information. Any unauthorized review, use, disclosure or distribution is prohibited. If you are not the intended recipient, please contact the sender by reply e-mail and destroy all copies of the original message.





# EARLY LEARNING IN THE STUDENT SUCCESS ACT

## A STUDENT'S SUCCESS BEGINS EARLY

Children are born learning. Learning does not begin in kindergarten or even the first day of preschool. It starts at birth. Quality early learning sets children up for success.

The Student Success Act creates a new **Early Learning Account** to fund investments focused on children under the age of five and their families. Funding will support the expansion of existing programs, the creation of new programs and support for communities to deliver early learning. Partnerships with local community-driven organizations, such as Early Learning Hubs and Child Care Resource and Referral Entities, will be critical to the success of this work and engaging families and providers across Oregon. New and expanded programs will help narrow gaps for low-income families to access early care and education programs.

## THE EARLY LEARNING ACCOUNT

**\$200 million** per year (or at least 20% of the overall SSA investment of \$1 billion) will serve 15,000 children birth to five years old in the following ways:

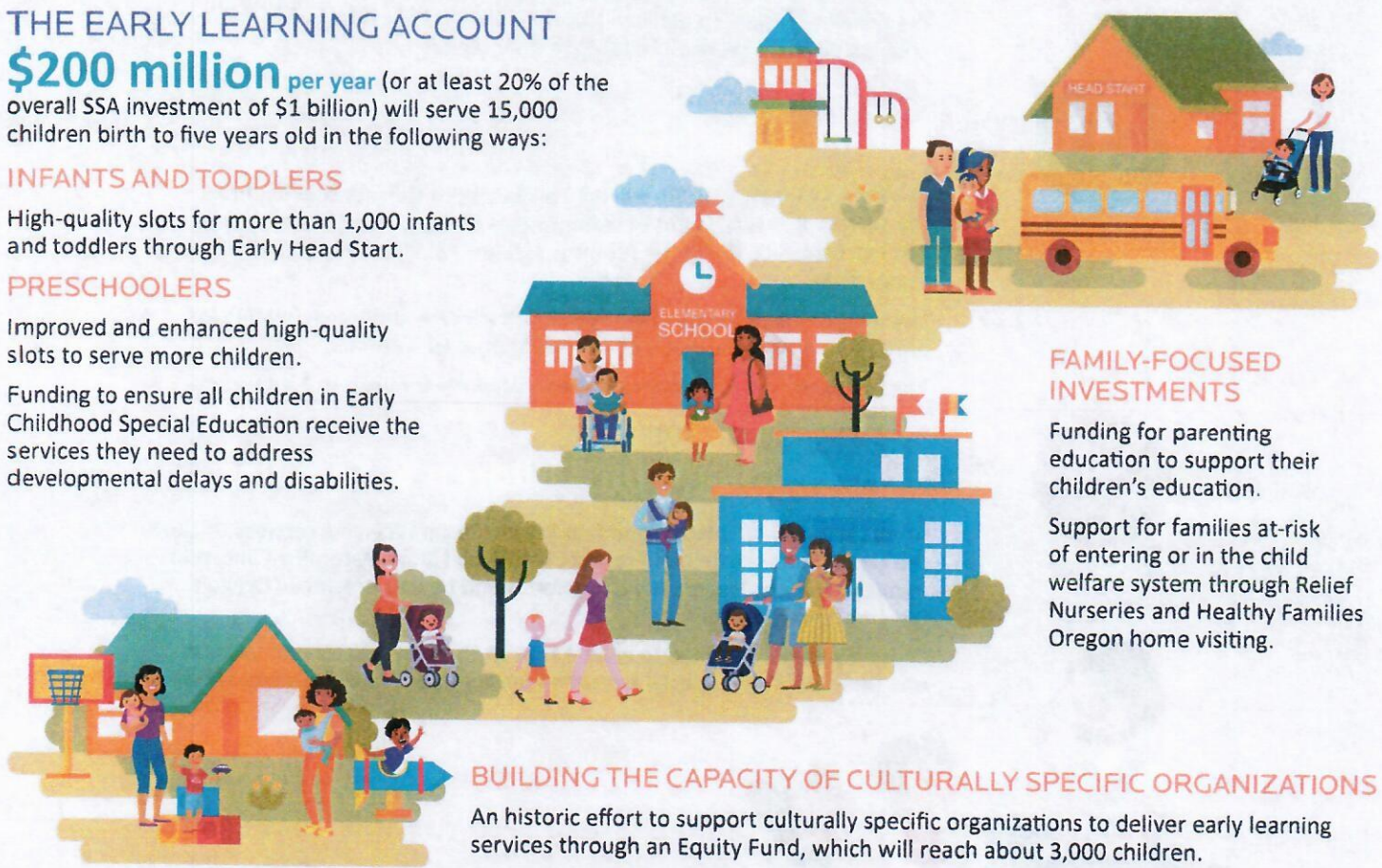
### INFANTS AND TODDLERS

High-quality slots for more than 1,000 infants and toddlers through Early Head Start.

### PRESCHOOLERS

Improved and enhanced high-quality slots to serve more children.

Funding to ensure all children in Early Childhood Special Education receive the services they need to address developmental delays and disabilities.



### FAMILY-FOCUSED INVESTMENTS

Funding for parenting education to support their children's education.

Support for families at-risk of entering or in the child welfare system through Relief Nurseries and Healthy Families Oregon home visiting.

### BUILDING THE CAPACITY OF CULTURALLY SPECIFIC ORGANIZATIONS

An historic effort to support culturally specific organizations to deliver early learning services through an Equity Fund, which will reach about 3,000 children.

## EQUITY

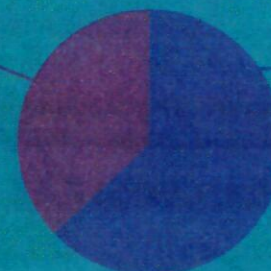
Too many children have not had the opportunity to reach their full potential because of the limited supply of early childhood education and gaps between which families can and cannot afford access to programs. For this reason, the investments in the early learning account target services for young children in low-income families. Through the act, more than 15,000 children will be reached through expanded or enhanced programs.

\*current and anticipated

## 3 AND 4 YEAR OLDS SERVED IN PRESCHOOLS

**16,000**

3 and 4 year olds in low-income families served in high-quality preschool\*



**27,000**

3 and 4 year olds in low-income families unserved in high-quality preschool



## HOW WILL THE EARLY LEARNING ACCOUNT SUPPORT EARLY CHILDHOOD EDUCATORS?

The legislation earmarks **\$12.5 million** for professional learning to support **early childhood educators** with training, technical assistance, coaching and other key supports. In addition, the account will support coaching in Early Head Start, Preschool Promise and Oregon Pre-kindergarten.

## WHAT OTHER FUNDS ARE IN THE ACCOUNT TO SUPPORT COMMUNITIES?

**Additional funding** will help support minor improvements for facilities to meet **program standards**. Funding will also go to Early Learning Hubs for Early Care and Education Plans and coordination of enrollment between preschool programs.

# Early Learning in The Student Success Act Timeline



NOW – EARLY 2021

## Community-Led Planning

In partnership with local organizations, Early Learning Hubs will lead the process to develop plans to target services within their communities and create a vision to serve all children in their region.



MARCH - JULY 2020

## Funding Decisions

The Early Learning Division will lead processes to allocate funding from the Early Learning Account to communities for Early Head Start, Oregon Pre-kindergarten, Preschool Promise, Healthy Families Oregon and the Equity Fund.

The Oregon Department of Education will allocate additional funding for Early Intervention and Early Childhood Special Education.

The Early Learning Division will expand supports for birth to 5 educators.

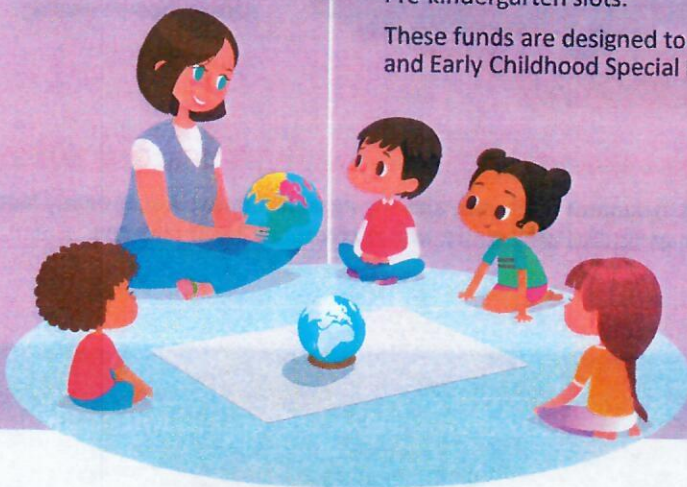


AUGUST – SEPTEMBER 2020

## Services Begin for Children & Families

More than 15,000 children and families will begin receiving services through the Equity Fund, Preschool Promise, Early Head Start, Parenting Education, Healthy Families Oregon, Relief Nurseries and new or enhanced Oregon Pre-kindergarten slots.

These funds are designed to ensure that all children in Early Intervention and Early Childhood Special Education programs will have access to services.



For more information on **early learning investments** in the Student Success Act, go to <https://oregonearlylearning.com/student-success-act>.

## #StudentSuccessAct





# STUDENT Success Act

## HOW FUNDING FOR SERVICES FLOWS FROM THE EARLY LEARNING ACCOUNT



Learn more: <https://oregonearlylearning.com/student-success-act>.  
 Follow us on Twitter @OREarlyLearning or Facebook @OREarlyLearning

#StudentSuccessAct

